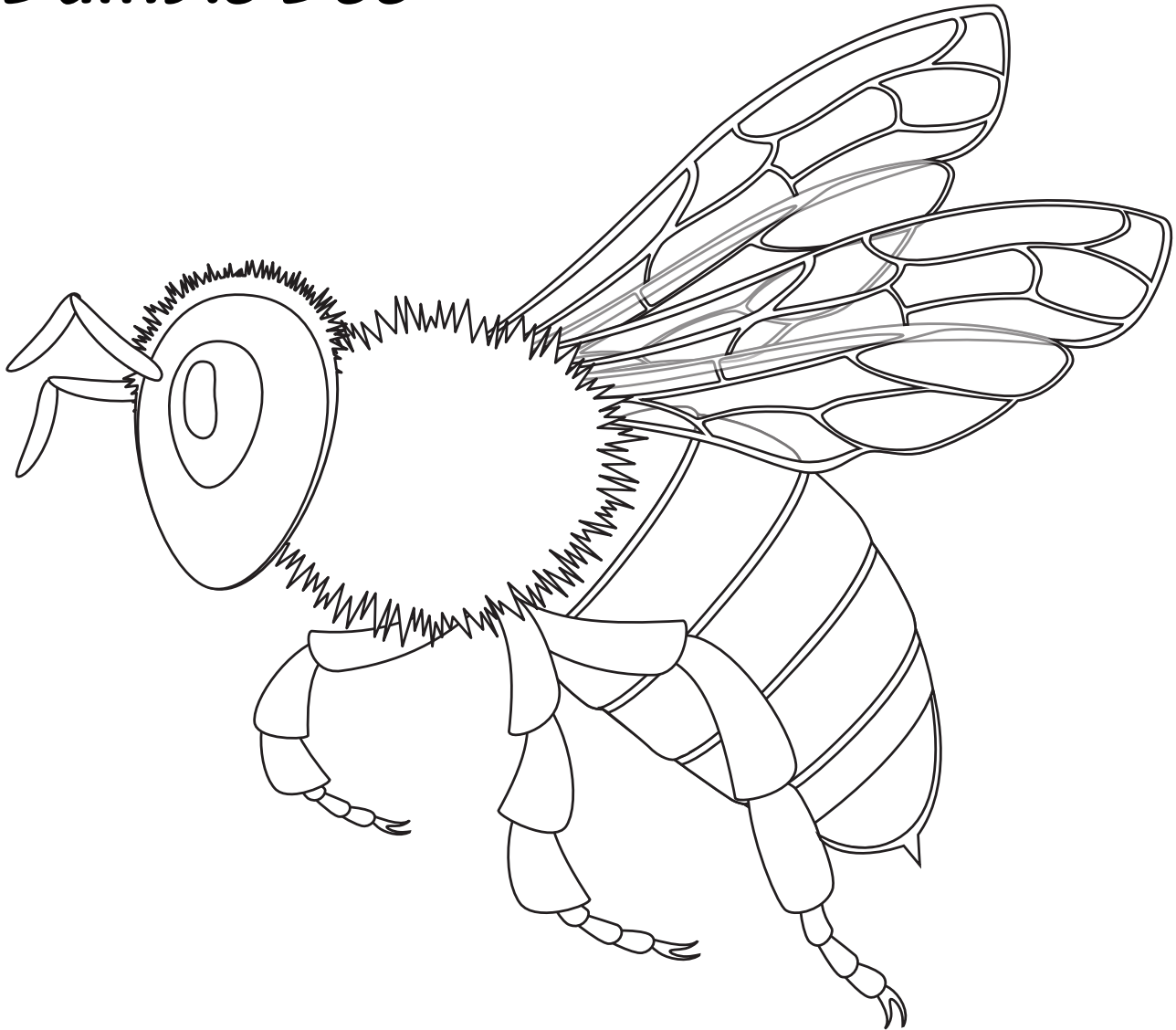


Gypsy Cuckoo Bumble Bee



Want to help?

There are several ways you can help support the protection of Gypsy Cuckoo Bumblebees.

- Build a bee house (like a bird house) to help them feel more at home in your community. Bee houses are easy to make, provide cover and keep bees warm.
- Feed the bees. Planting bee attracting flowers, such as asters, primroses, heathers, dahlias, sunflowers, cosmos or goldenrods to provide nutritious food for bees.
- Spread the word about how important bees are in our ecosystem.
- Avoid pesticides on your lawn and garden, because they can hurt bees.
- Avoid disturbing and killing bees.